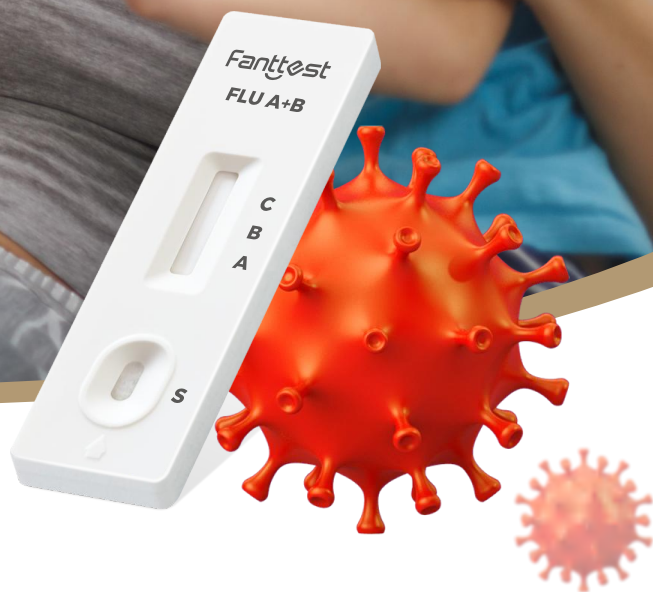


# Fanttest

CE

## FLU A+B Antigen Rapid Test Cassette

It can quickly detect 2 viruses with 1 test  
within 15 minutes.  
High sensitivity, accurate results and easy operation.



### Methodology

Using the principle of double antibody sandwich method.



### Operation

Simple operation, easy to interpret, sampling and testing can be done anytime.



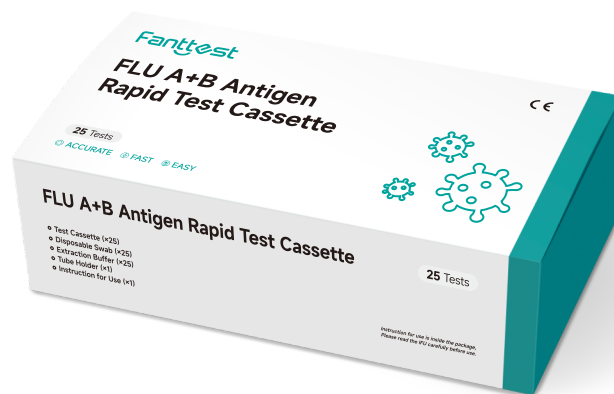
### Detection

The detection is fast, the result can be interpreted in 15 minutes.



### Accuracy

High sensitivity and specificity.



Hangzhou Fanttest Biotech Co., Ltd.

✉ info@fanttest.com

☎ +86 571 8633 7555

🌐 www.fanttest.com

## Product background

Influenza virus can cause acute respiratory infections. It is highly contagious and has a short incubation period. It can not only cause upper respiratory tract and lung infections, but also cause systemic multiple organ infections such as the brain, heart, and pancreas. It is a very harmful global infectious disease. Therefore, Rapid testing for influenza is the first step in the diagnosis and control of influenza, and rapid detection of influenza virus is of great significance.

## Intended use

This product is used to qualitatively detect influenza A and B virus nucleoprotein antigens in human nasopharyngeal swab or nasal swab samples.

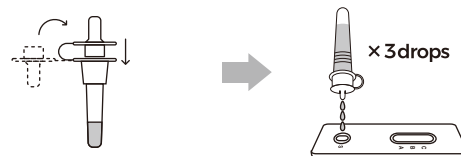
## Operation steps and result interpretation



**Nasal Swab**  
Use the nasal swab provided in the cassette.

1. Use a swab to insert the left and right nostrils one by one.
2. Wipe the inner wall of the nostril and rotate the swab in each of the left and right nostrils.
3. Make sure that there is liquid, and remove the swab from the nostril.

*Note: Use the same cotton swab to collect sample from both nostrils.*



**Nasopharyngeal swab**  
Use the nasopharyngeal swab supplied in the kit.

1. Carefully insert the swab into the nostril of the patient, reaching the surface of posterior nasopharynx, that presents the most secretion under visual inspection.
2. Swab over the surface of the posterior nasopharynx. Rotate the swab several times.
3. Withdraw the swab from the nasal cavity.



- **Influenza A positive (+):** A red band appears in the control line area (C), and another red band appears in the A area (A), which is positive for influenza A.
- **Influenza B positive (+):** A red band appears in the control line area (C) and another red band appears in the B area (B), which is positive for influenza B.
- **A+B positive influenza (+):** A red band appears in the control area (C), and two red bands appear in the A area (A) and B area (B) at the same time.
- **Negative (-):** Only a purple-red band appears in the control line area (C). There is no purple-red band in the detection area (A, B).
- **Invalid:** There is no purple-red band in the control line area (C).

## Product information

Product name	Specimen	Format	Pack/box	Shelf life	Storage temperature	Certificate
FLU A+B Antigen Rapid Test Cassette	Nasopharyngeal swab /Nasal swab	Cassette	25T	24months	2-30°C	CE